



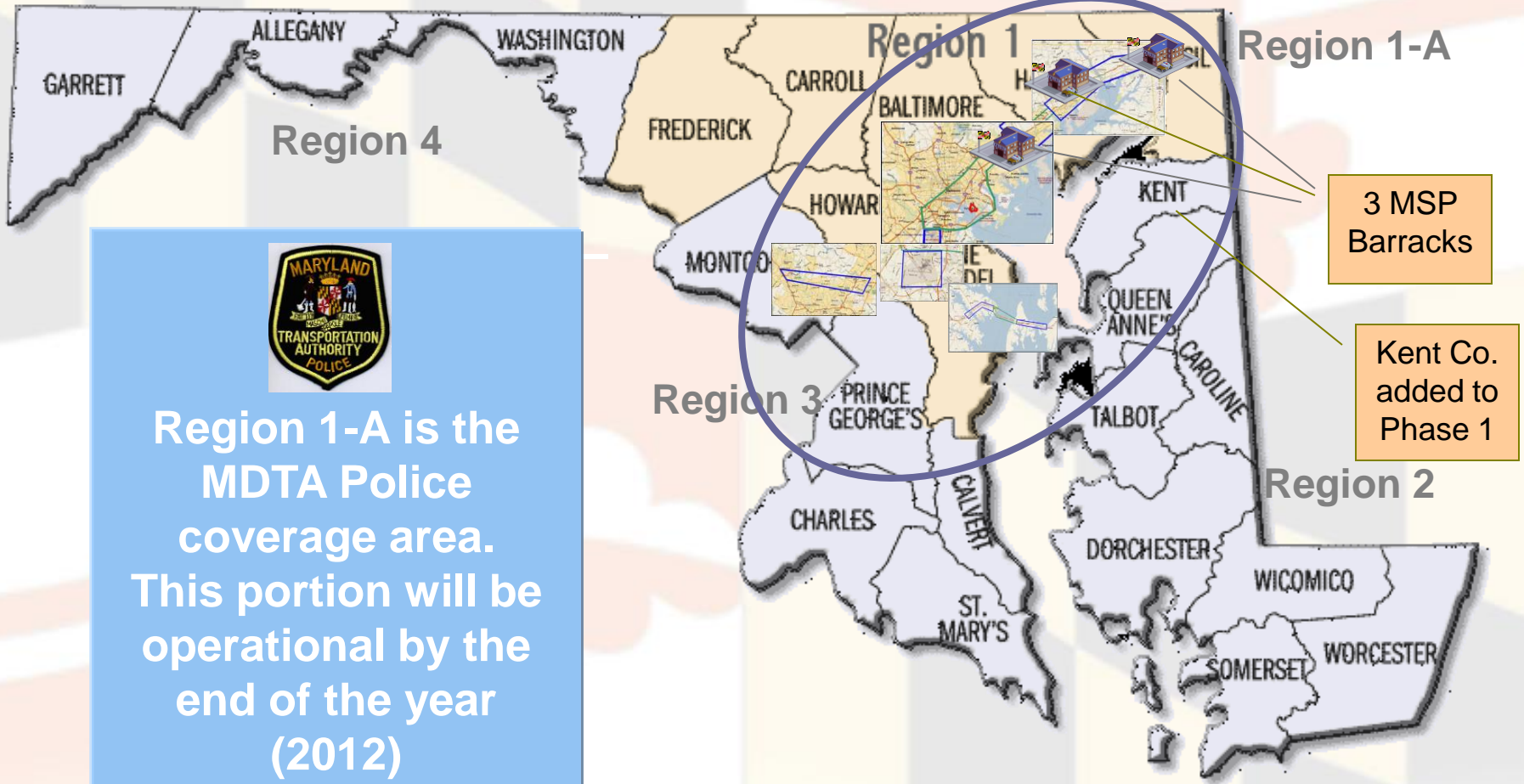
Statewide 700 MHz Communications Project Update - Phase 1

- Governor's "First Call" Completed
 - June 5th to show progress
 - Calls made from JFK Barrack
 - Pikesville MSP
 - Bay Bridge
 - Kent County
- Coverage Testing Completed, August 2012.
 - Area of coverage is divided into Grids and calls are placed to measure coverage in each grid.
- Training underway and continues through October
 - Technicians, Dispatchers, End Users (over 1,000 people)
- System acceptance end of 2012
 - 30 Day "Burn-In" period with system fully operational





700 MHz Project Regions



Region 1-A is the MDTA Police coverage area. This portion will be operational by the end of the year (2012)



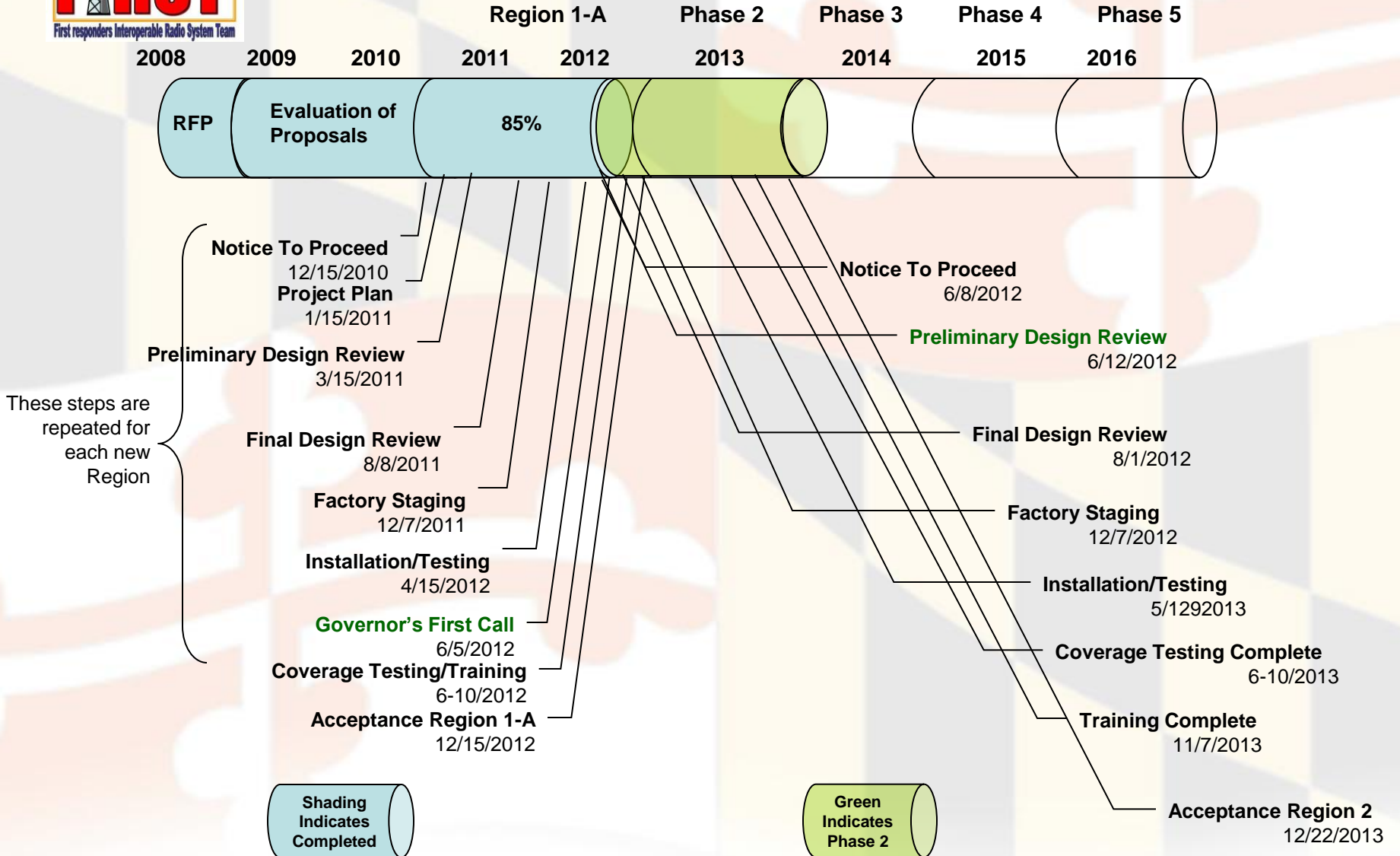
Statewide 700 MHz Communications Project Update – Phase 2



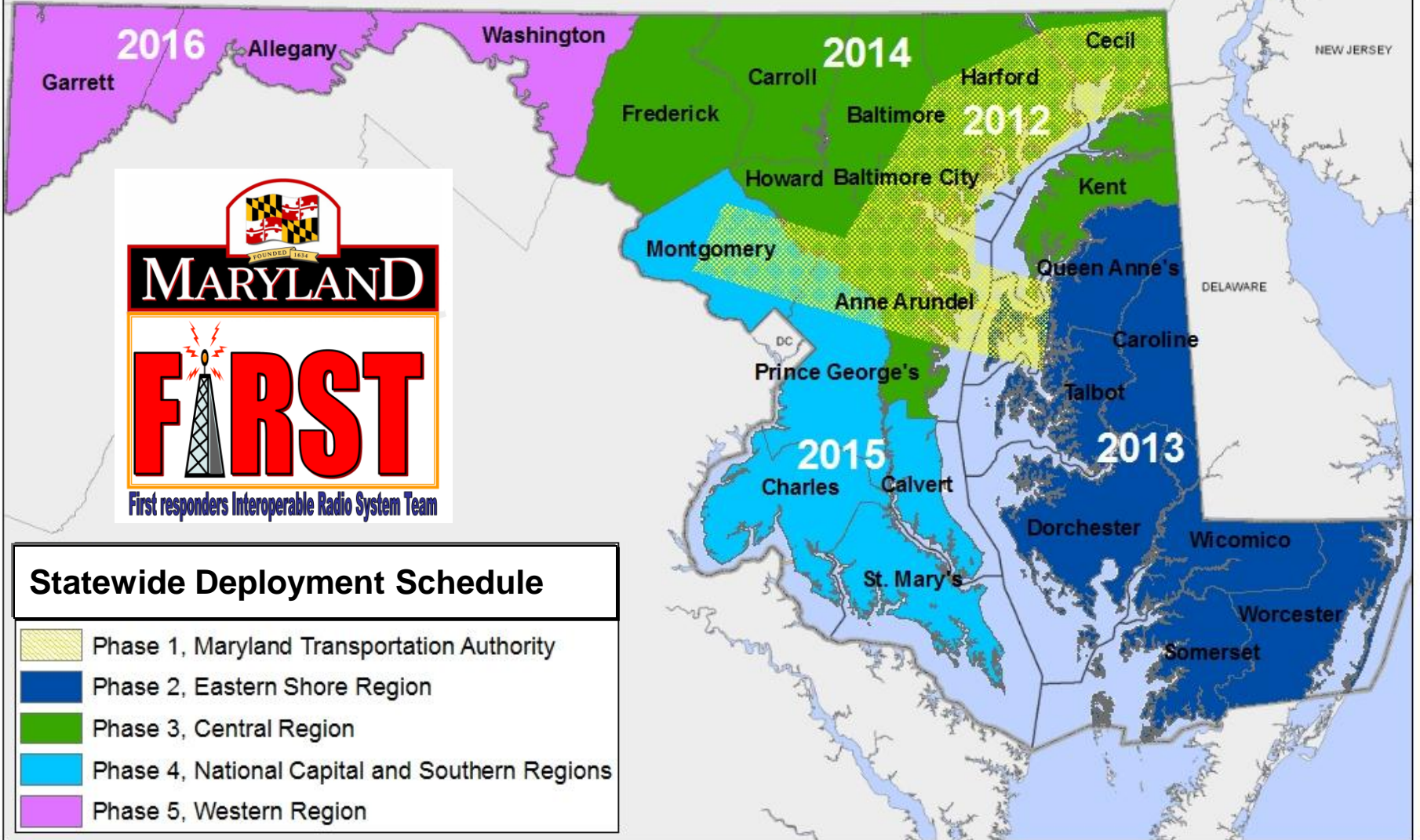
- We are “on budget” for Region 1-A
- Additional \$25.25M Capital funds approved for Phase 2,
 - SHA Contributing \$10M
 - \$35.25M for FY13 for Eastern Shore Deployment
- Statewide system will offer enhancements for locals
 - Redundancy
 - State resources (towers, back haul, equipment, personnel, training. Frequency coordination, etc.)
 - Statewide roaming on the MD FiRST system.
 - Seamless Interoperability with all other jurisdictions who join the system.



MD FiRST Project Schedule



PENNSYLVANIA



Statewide Deployment Schedule

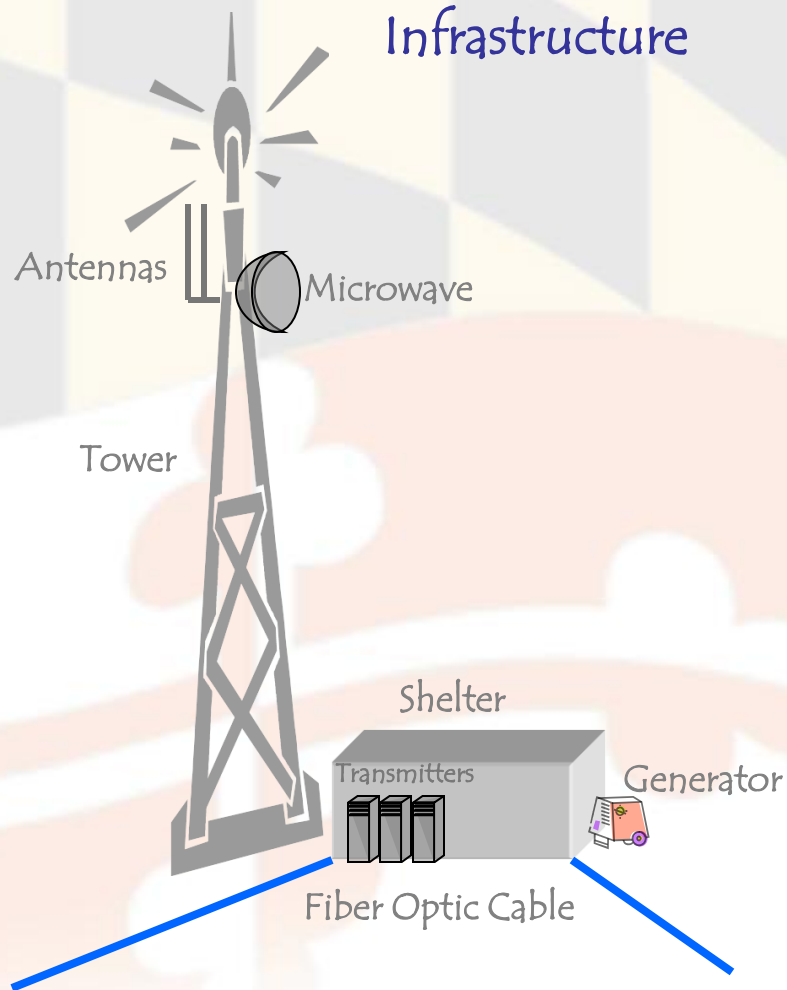
-  Phase 1, Maryland Transportation Authority
-  Phase 2, Eastern Shore Region
-  Phase 3, Central Region
-  Phase 4, National Capital and Southern Regions
-  Phase 5, Western Region



Created December 8, 2011



What the State Provides



What the Agency Provides

Subscriber Equipment

